

Data Sheet



Brackish Water Reverse Osmosis (RO) Membranes

BW440UES

Ultra Low Energy

Overview

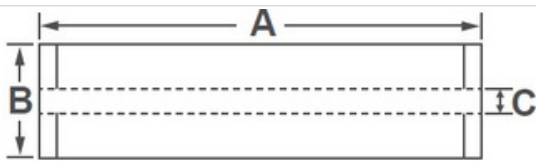
The company brackish water RO membranes serve various municipal and industrial applications and have been operating in the major utilities around the world. Incorporating innovative Thin Film Nanocomposite (TFN) technology, all The company's BWRO membranes provide superior performance along with intrinsic anti-fouling property and are suitable for applications where consistent and reliable performance is a must.

The company BW UES membranes offer high permeability at ultra-low feed pressure, significantly reducing operating costs: suitable for low salinity brackish water applications.

Product Specifications

Active Membrane Area, ft ² (m ²)	Permeate flow rate, GPD (m ³ /d)	Stabilized Salt Rejection, %	Minimum Salt Rejection, %	Feed Spacer, mil
440 (41)	12,650 (47.9)	99.0	98.0	28

Test Conditions : 2,000 ppm NaCl at 25°C (77°F), 125 psi (8.6 bar), pH 7, Recovery 15%. Permeate flows for individual elements may vary +/-20%.



A, mm (in.)	B, mm (in.)	C, mm (in.)	Weight, kg (lbs.)
1,016 (40)	200 (7.9)	28.6 (1.125)	16 (35)

All dimensional information is indicative and for reference purpose only. Please contact The company Chemfor detailed technical specification.

Operating Specifications

Max. Applied pressure

Max. Chlorine concentration	600 psi (41 bar)
Max. Operating temperature	< 0.1 ppm
pH Range, Continuous (Cleaning)	45°C (113°F)
Max. Feedwater turbidity	2-11 (2-12)
Max. Feedwater SDI (15 mins)	1.0 NTU
Max. Feed flow	5.0
Max. Pressure drop (ΔP) for each element	75 gpm (17 m ³ /h)
	15 psi (1.0 bar)

The information and data contained herein are deemed to be accurate and reliable and are offered in good faith, but without guarantee of performance. The company assumes no liability for results obtained or damages incurred through the application of the information contained herein. Customer is responsible for determining whether the products and information presented herein are appropriate for the customer's use and for ensuring that customer's workplace and disposal practices are in compliance with applicable laws and other governmental enactments. Specifications subject to change without notice.

Data Sheet



Brackish Water
Reverse Osmosis (RO) Membranes
BW 440 UES
Ultra LowEnergy

Referential Performance at 500 ppm NaCl

Type	Pressure	Projected performance*
LG BW 440 UES	100 psi (6.89 bar)	12,430 GPD, 99.3%
	110 psi (7.58 bar)	13,750 GPD, 99.4%

Test Conditions : 100/110 psi, 500 ppm NaCl at 25°C (77°F), pH 7, Recovery 15%. All calculated data is obtained from Q+ software.